



MiniMed™ 780G pump

MINIMED™ 780G SYSTEM
AUTOMATED TO HELP
MORE PATIENTS REACH
GLYCAEMIC TARGETS
WITH LESS EFFORT¹⁻⁴

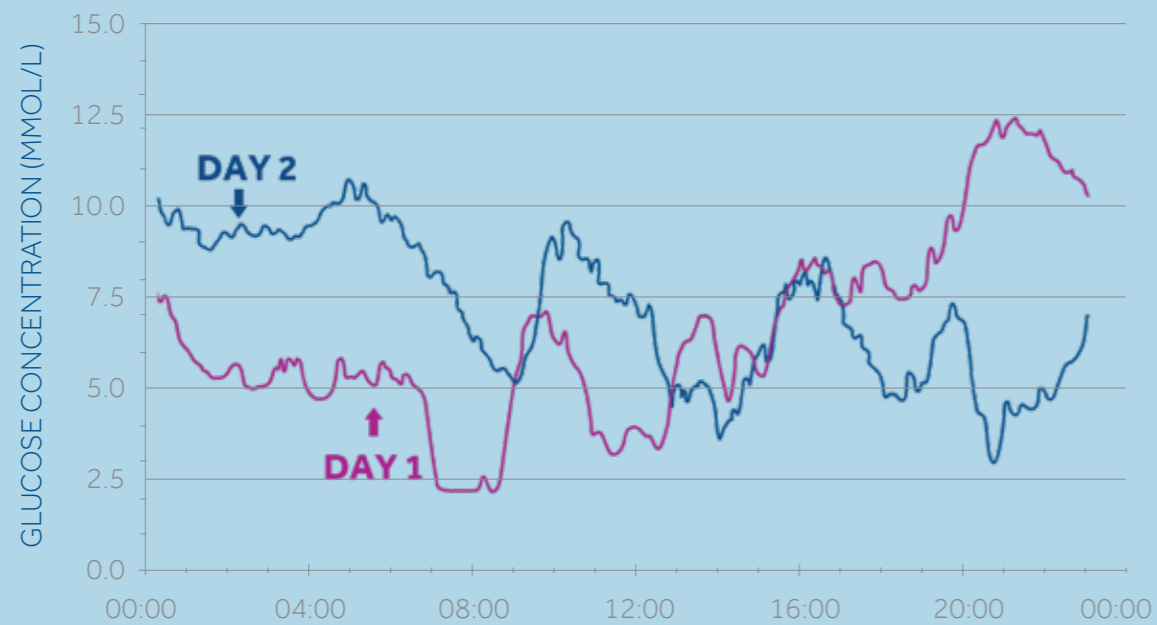
Medtronic

PATIENTS EXPERIENCE CHALLENGES EVERY DAY

GLUCOSE LEVELS VARY EACH DAY AND NIGHT, INSULIN NEEDS TO ADAPT



42 factors may affect blood glucose levels.⁵



CORRECTION BOLUSES ADMINISTERING THE RIGHT AMOUNT



1 OUT OF 3 high glucose episodes are not followed by a correction bolus.⁶



1 OUT OF 2 times correction boluses are wrongly calculated for managing hyperglycemia.⁷

CARB COUNTING CALCULATING AN ACCURATE BOLUS



NEARLY 50% of people with T1D consider counting carbohydrates as the most burdensome aspect of diabetes self-care.⁸

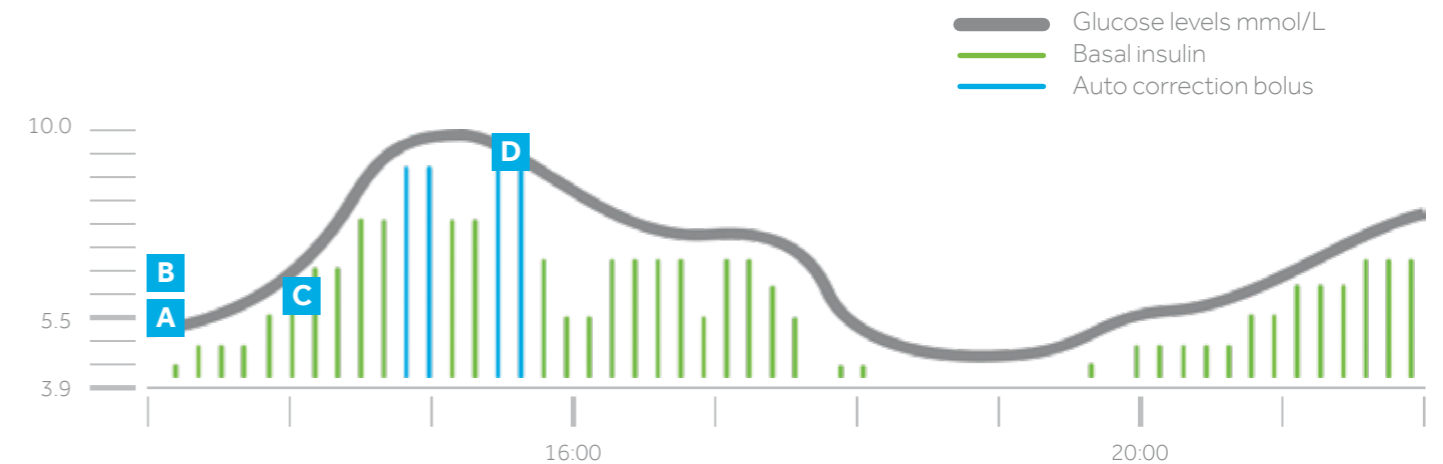


59% people with T1D do not count meal carbohydrates correctly.⁹

MINIMED™ 780G SYSTEM AUTOMATICALLY ADJUSTS INSULIN DELIVERY AND CORRECTS HIGHS, EVERY 5 MINUTES, AS NEEDED*



SMARTGUARD™ TECHNOLOGY HELPS PREVENT HIGHS AND LOWS^{1,10}



For illustrative purposes only.

- A** Selection between a basal target of 5.5 mmol/L (default setting), 6.1 mmol/L or 6.7 mmol/L
- B** The auto correction target is set at 6.7 mmol/L
- C** Basal insulin adjusts every 5 minutes based on SG values
- D** Auto corrections delivered as needed, as frequent as every 5 minutes

SMARTGUARD™ AUTO CORRECTIONS: AUTOMATICALLY ADJUSTS INSULIN DELIVERY IN CASE CARB COUNTS AREN'T EXACT^{1*}

Bolus is delivered automatically up to every 5 minutes if algorithm determines it's needed:

- Maximum auto basal delivery is reached
- SG is above 6.7 mmol/L

SELF-ADJUSTING BASAL INSULIN PUMP SYSTEM WITH AUTO CORRECTION DOSING*

MINIMED™ 780G INSULIN PUMP

Receives info from the CGM to calculate insulin adjustments and corrections.



MiniMed™ 780G pump



GUARDIAN™ SENSOR 3

CGM sensor measures glucose levels every 5 minutes, sending info to the pump



BLOOD GLUCOSE METER

Accurate test results from the Accu-Check® Guide Link blood glucose meter are sent wirelessly to the pump for quick sensor calibration.

SMARTPHONE CONNECTIVITY FOR GREATER CONVENIENCE AND PEACE OF MIND



MINIMED™ MOBILE APP

Displays pump & CGM information on a smartphone, with customisable options for alerts.** Patients can easily view their Time in Range data to track their goals.**



CARELINK™ CONNECT APP

Your patients can choose to share their real-time diabetes data with their care partners.** Care partners can check glucose values on their phone and get alerts if patients are going high or low.**

REMOTE FOLLOW-UPS AND AUTOMATIC UPLOADS OF PATIENT DATA***



CARELINK™ SOFTWARE

Provides insights that support meaningful conversations with your patients.

ACCESS TO DATA

Smartphone connectivity enables automatic and secure uploads of patient data.** CareLink™ reports update every 24 hours.

VIRTUAL VISITS

Patients can link to your clinic and share data without leaving home.

WECARE: SUPPORTING YOUR PATIENTS THROUGH THEIR DIABETES JOURNEY

STARTRIGHT™

- Personalised onboarding programme for pump therapy & CGM
- Learning & educational tools
- Continuous communication with our StartRight™ specialists



TECHNICAL SUPPORT & TRAINING

- 24/7 on & offline technical helpline
- Hands-on training

PATIENT COMMUNITY

WECARE PORTAL

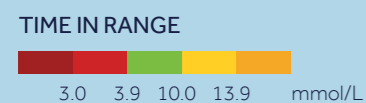
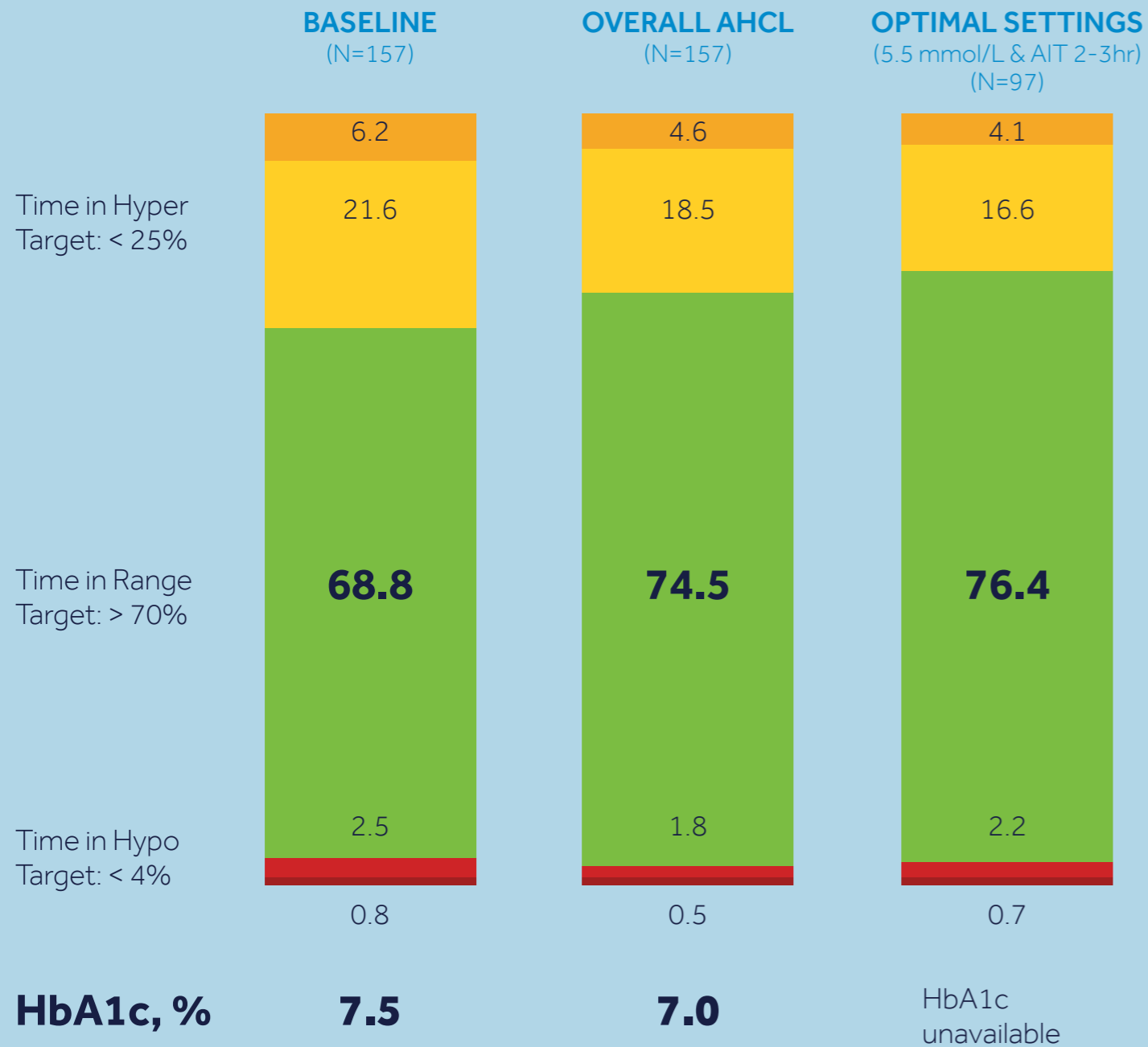
- Personalised and reliable non-medical educational content
- eShop access

CARELINK™

- Ability to access and monitor data at any time
- Empowering therapy management

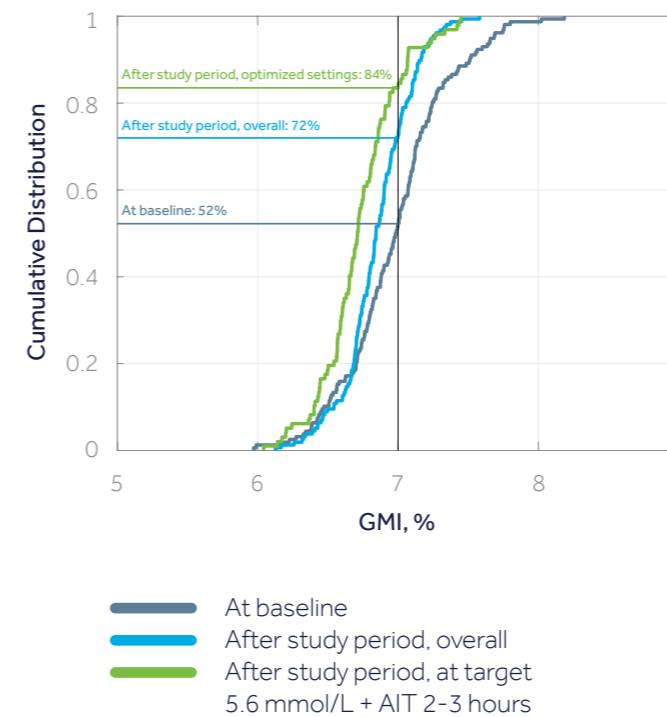
IMPROVED OUTCOMES HELPS TO REACH TIME IN RANGE AND HbA1c GOALS^{1,3,4,10}

AHCL US PIVOTAL TRIAL

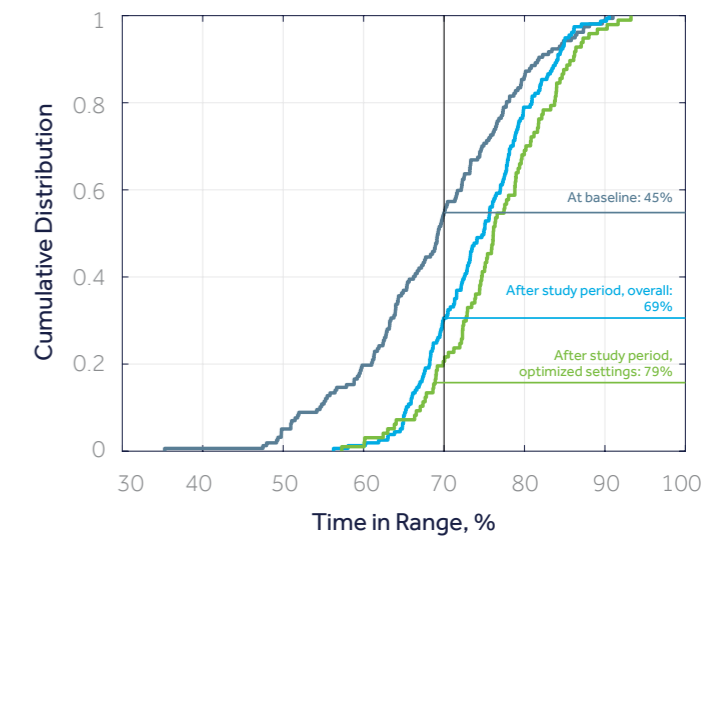


AUTOMATED TO HELP MORE PATIENTS REACH GLYCAEMIC TARGETS WITH LESS EFFORT¹⁻⁴

84% of subjects achieved GMI goal after study period with optimised settings versus **52%** at baseline



79% of subjects achieved Time in Range goal after study period with optimised settings versus **45%** at baseline



"The system takes the worry and stress away for me and my family, especially over highs and lows."

MiniMed™ 780G system patient

72% claim "Less effort to avoid highs"²

70% claim "Less effort to avoid lows"²

MINIMED™ 780G INSULIN PUMP SYSTEM

Take a tour of our latest insulin pump technology with a virtual demonstration of the MiniMed™ 780G insulin pump.



Scan the QR code to access the MiniMed™ 780G virtual demo.



REFERENCES

*Refer to System User Guide - SmartGuard™ feature. Some user interaction required.

**Patient must use MiniMed™ Mobile app with Sync to CareLink™ feature turned on.

***Refer to CareLink™ Connect app Instructions for Use. CareLink™ Connect app requires internet connection.

1. Carlson, AL, et al. Poster at the 80th International Conference of the American Diabetes Association, June 12-16, 2020, Chicago/Virtual
2. Medtronic data on file. Pivotal Trial (Age 14-75). N=157. 2020; 16 US sites
3. Battelino T, et al. Diabetes Care 2019;42(8): 1593-1603
4. ADA Guidelines <https://www.diabetes.org/a1c>
5. Brown A. Diatribe.org. <https://diatribe.org/42factors> Accessed June 4, 2020.
6. Westen SC, et al. Journal of Pediatric Psychology, 44(1), 2019, 21-31.
7. Glaser NS, et al. JPEM. 2004;17(12):1641-1651
8. Medtronic data on file. 25-minute survey, N= 498 T1D individuals in Germany, Japan, US, Brazil, August 2019.
9. Meade LT et al. Clin Diabetes. 2016;34(3).
10. Collyns O, et al. Poster at the 80th International Conference of the American Diabetes Association, June 12-16, 2020, Chicago/Virtual

UC202107103 EN ©2020 Medtronic. All rights reserved. Medtronic and the Medtronic logo are trademarks of Medtronic.™* Third party brands are trademarks of their respective owners. All other brands are trademarks of a Medtronic company.

ACCU-CHECK AND ACCU-CHEK GUIDE LINK are trademarks of Roche Diabetes Care. For detailed information regarding the instructions for use, indications, contraindications, warnings, precautions, and potential adverse events, please consult the device manual. For further information, contact your local Medtronic representative.

DreaMed Diabetes is a trademark of DreaMed Diabetes, Ltd. The MiniMed™ 780G system algorithm includes technology developed by DreaMed Diabetes.

Medtronic Limited
Building 9, Croxley Park
Watford,
Hertfordshire
WD18 8WW
Diabetes Helpline:
+44 (0) 1923 205167
medtronic-diabetes.co.uk

Medtronic Ireland Limited
Block 3090-3094, Lake
Drive Citywest Business
Campus Dublin
DN24 XN47
Diabetes Helpline:
+353 (0) 15111499
medtronic-diabetes.ie

dreamed
diabetes ai



Medtronic