

TRAINING GUIDE

i-Port Advance™

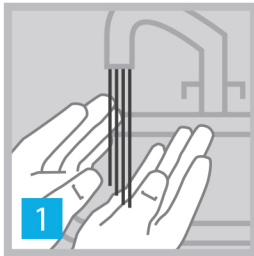
i-Port Advance is available from



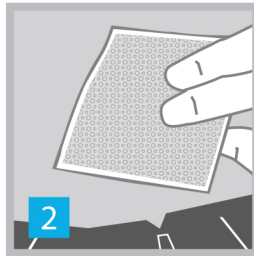
hce-uk.com

+44(0)1784 220 400

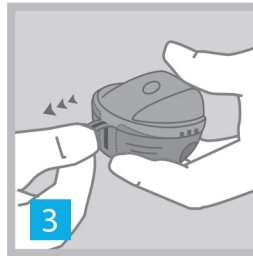
APPLY



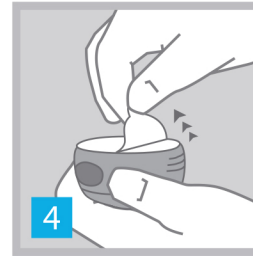
1
Wash hands with soap and water.



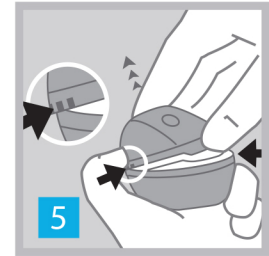
2
Swab skin with alcohol or similar disinfectant. (Let skin surface dry completely prior to applying the device.)



3
Pull red tab and remove seal.



4
Remove sterile paper.



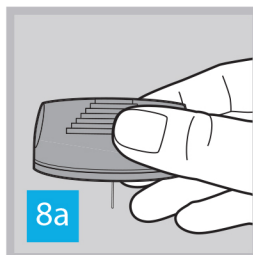
5
Securely hold inserter and remove plastic lid.



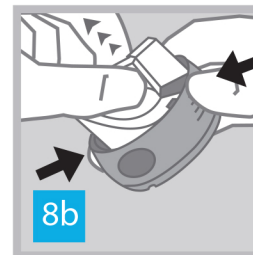
6
Remove adhesive liner from adhesive pad.



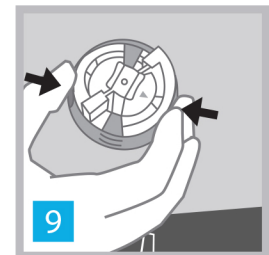
7
Twist and remove needle guard from introducer needle.



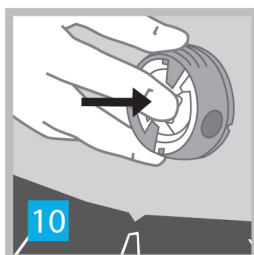
8a
Introducer needle should be facing down.



8b
Put fingers on lined ridges, then pull up on center of inserter until locked in upright position.



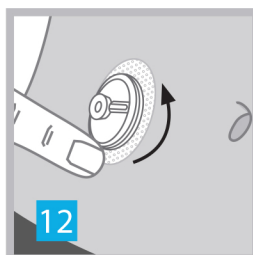
9
Place inserter against prepared site and put fingers on round indentations. Squeeze round indentations simultaneously to insert injection port.



10
Press down on center of inserter to secure injection port to skin.



11
Grab center of inserter only and gently pull to remove inserter from injection port.



12
Secure adhesive pad to skin.



13
Replace plastic lid and dispose according to local requirements.

HELPFUL TIPS

- Before applying your i-Port Advance, identify the difference between the "round indentations" and the "lined ridges" in the inserter
- Only pull from the center of the inserter to remove inserter from the injection port (See Step 11)

TRAINING GUIDE

i-Port Advance™

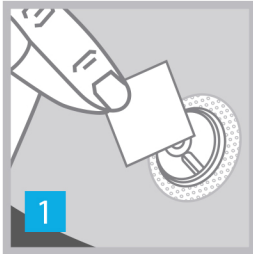
i-Port Advance is available from



hce-uk.com

+44(0)1784 220 400

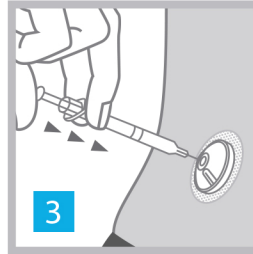
USE



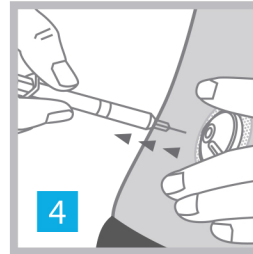
1 Clean septum before each use.



2 Puncture septum using injection needle.

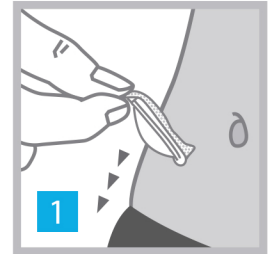


3 Slowly inject medication.



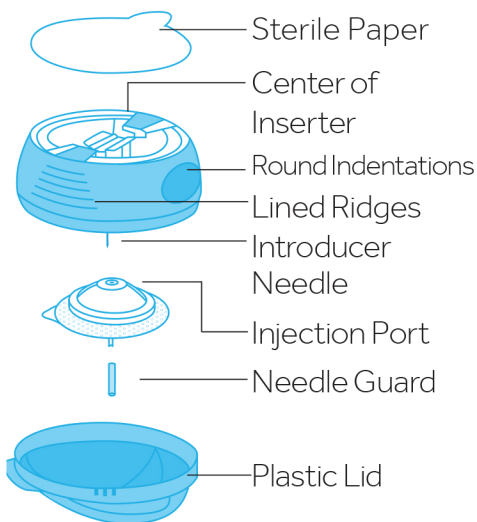
4 Remove injection needle.

REMOVE

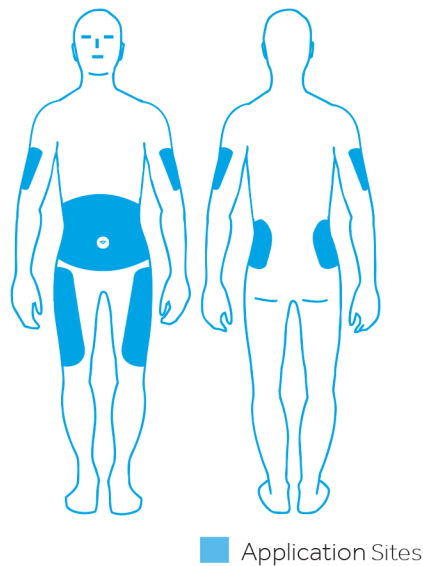


1 Grab edge of adhesive pad and remove from skin.

Get to know i-Port Advance



Where to apply



This is supplemental information to your User Guide. Please read the User Guide for complete instructions.

How to order:

iPort Advance is available from Health-Care Equipment

WWW.HCE-UK.COM ☎ +44(0)1784 220 400 ✉ sales@hce-uk.com



HELPFUL TIPS

- Use i-Port Advance with both pens and syringes between 3/16–5/16" (5mm–8mm)
- A single port can be used to inject rapid- and long-acting insulin as long as you wait 60 minutes between injections and always inject rapid-acting insulin first.¹
- After 72 hours of wear or 75 injections, whichever comes first, replace i-Port Advance and rotate sites.

Medtronic

PRODUCT SUPPORT
01923 205167

i-Port Advance is registered in U.S. Patent and Trademark Office. 940M12078-012 20140127 © 2017 Medtronic MiniMed, Inc. All Rights Reserved.

¹Blevins T, Schwartz SL, Bode B et al. A study assessing an injection port for administration of insulin. *Diabetes Spectr*. 2008;21(3):197–202