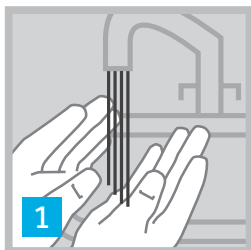


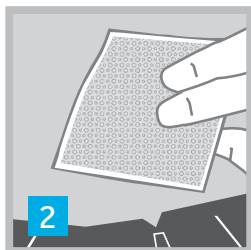
TRAINING GUIDE

i-Port Advance™

APPLY



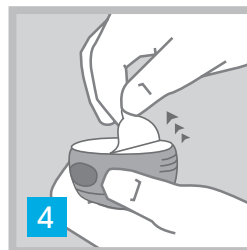
1 Wash hands with soap and water.



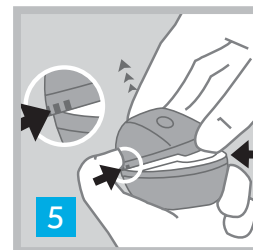
2 Swab skin with alcohol or similar disinfectant. (Let skin surface air dry completely prior to applying the device.)



3 Pull red tab and remove seal.



4 Remove sterile paper.



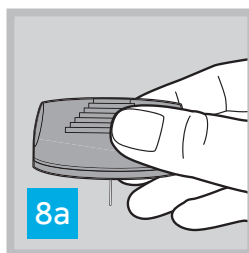
5 Securely hold inserter and remove plastic lid.



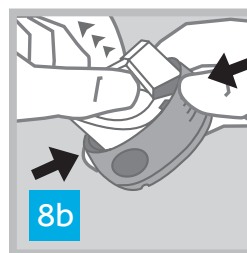
6 Remove adhesive liner from adhesive pad.



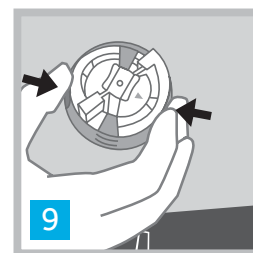
7 Twist and remove needle guard from introducer needle.



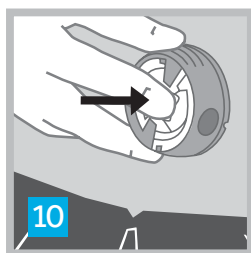
8a Introducer needle should be facing down.



8b Put fingers on lined ridges, then pull straight up on center of inserter until locked in upright position.



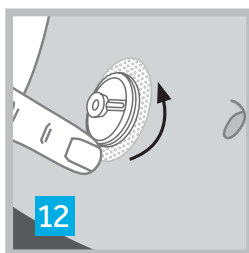
9 Place inserter against prepared site and put fingers on round indentations. Squeeze round indentations simultaneously to insert injection port.



10 Press down on center of inserter to secure injection port to skin.



11 Grab center of inserter only and gently pull straight up to remove inserter from injection port.



12 Secure adhesive pad to skin.



13 Replace plastic lid and dispose according to local requirements.

HELPFUL TIPS

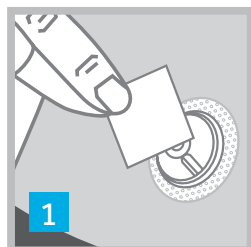
- Before applying your i-Port Advance™, identify the difference between the "round indentations" and the "lined ridges" in the inserter
- Only pull from the center of the inserter to remove inserter from the injection port (See Step 11)

Medtronic
Further, Together

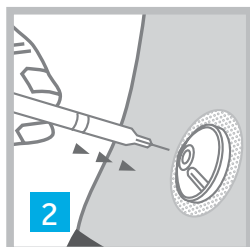
TRAINING GUIDE

i-Port Advance™

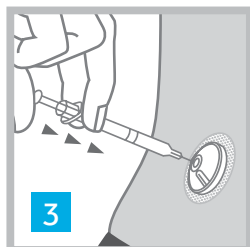
USE



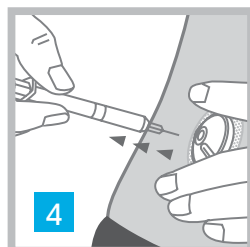
Clean septum with pure water before each use.



Puncture septum using injection needle.

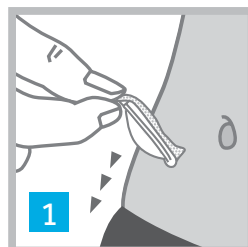


Slowly inject medication.



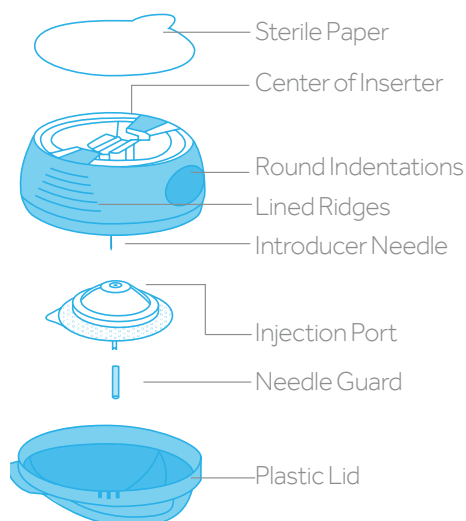
Remove injection needle.

REMOVE

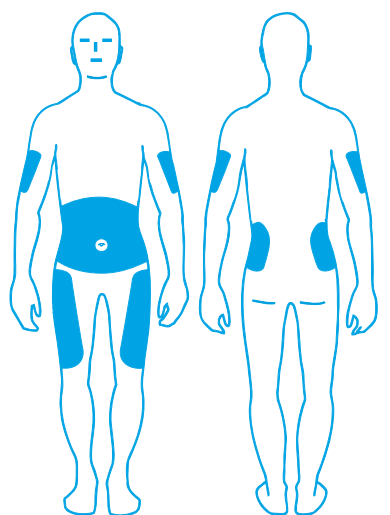


Grab edge of adhesive pad and remove from skin.

Get to know i-Port Advance



Where to apply



This is supplemental information to your User Guide. Please read the User Guide for complete instructions.

HELPFUL TIPS

- Use i-Port Advance™ with both pens and syringes between 3/16-5/16" (5mm-8mm) and max 28 gauge.
- A single port can be used to inject rapid- and long-acting insulin as long as you wait 60 minutes between injections and always inject rapid-acting insulin first.
- After 72 hours of wear or 75 injections, whichever comes first, replace i-Port Advance™ and rotate sites.

For a listing of indications, contraindications, precautions, warnings, and potential adverse events, please refer to the Instructions for Use™

United Kingdom
Medtronic Limited
Building 9, Croxley Park
Hatters Lane
Watford, Herts
WD18 8WW
Tel: +44 (0)1923 205 167
Fax: +44 (0)1923 241 004
www.medtronic-diabetes.co.uk

Medtronic

Medtronic Ireland Limited
Block 3090-3094
Lake Drive
Citywest Business Campus
Dublin
DN24 XN47
Tel: +353 (0)15111499
Fax: +353 (0)18077220
www.medtronic-diabetes.ie

Manufactured by Unomedical